

Monthly Building Inspection

Month February 2013

Inspected By: Drue Mielke Court House on January 25th and Animal Shelter on January 26th.

County Jail (1317 - Third Avenue): _____

Justice Center (1401 - Third Avenue): _____

Courthouse (210 - 15th Street): 1) Leakage from outside along window in rotunda has caused plaster damage. (see pic 1 & 2) 2.) Public traffic volume- As civil and traffic cases from auxiliary courtrooms in East Moline, Moline and Milan have been moved back, there is not enough courtroom space and halls are clogged with standing room only at times. 3) Law library has extreme heat of 85° + at times. Windows are left open to alleviate heating issue. 4) 3rd floor air-conditioning unit condensation drips onto 2nd floor ceiling of the order of protection area. 5) 3rd floor has a threshold issue which can cause people to trip (see pic 3) 6) Fire escape needs new door. Does not seal properly. Allows snow to enter building. 7.) Window in judges chambers is unable to be locked. Makeshift board keeps window in place and closed and window has bullet hole (see pic #4) 8.) Rock Island Fire Department does annual inspections but results are not transmitted to Jeff Jacobson, Sheriff Maintenance Supervisor., Please see continued observations on adjoining page.)

County Office Building (1504 - Third Avenue): _____

Ostrom Hall - Court Services (2116 - 25th Avenue): _____

Other Facilities Inspected: (Hope Creek Care 4343 Kennedy Drive East Moline; Emergency Management Agency 6120 - 78th Avenue Milan; Public Works 851 - West 10th Avenue Milan; Health Department 2112 - 25th Avenue Rock Island; Animal Control 4001 - 78th Avenue Moline; Juvenile Justice 525 - 18th Street Rock Island) Toured Animal Control with Sam DeYoung. 1) Furnace was installed at wrong orientation which necessitated cutting large hole in breakroom to provide access to change furnace filters. A panel could be installed that would be removed when replacing filter and then put back. 2) I was advised by Sam DeYoung that the heating system is geo-thermal with an expected 10 year lifespan. The shelter began operations at this location in January 2006. In doing cursory research, geothermal heating does not "stop" working but after 10 - 20 years become less efficient over time. I would be interested in knowing if the heating system is evaluated annually for efficiency and lifespan.

Additional Comments, Observations, or Requests from Office Holders & Department Heads: _____

- 9) Recycling "bin" in breakroom placed next to radiator. Probably not an issue. (see pic # 5).
- 10.) Restroom has painted window and step up access (see pic #7.)
- 11) Masonite ceiling tiles are crumbling where pieces are falling in room 302. (Pic # 9 & 10)
- 12) Judge Van Wille has logged in indoor climate control extremes of 106° high and low of 50° in 3 north.
- 13) Repair work being done on drinking fountain on 2nd floor rotunda due to lead pipe in fountain. ssue. (see pic #11).
- 14) Noted basement storage.
- 15) One circuit that does not allow air conditioning and coffee maker to operate at the same time. (pic # 17).
- 16) Rotunda netting needed? Is this a safety issue with public
- 17) Air-conditioning unit is 14 years old
- 18) Building has no emergency backup power source such as a generator.



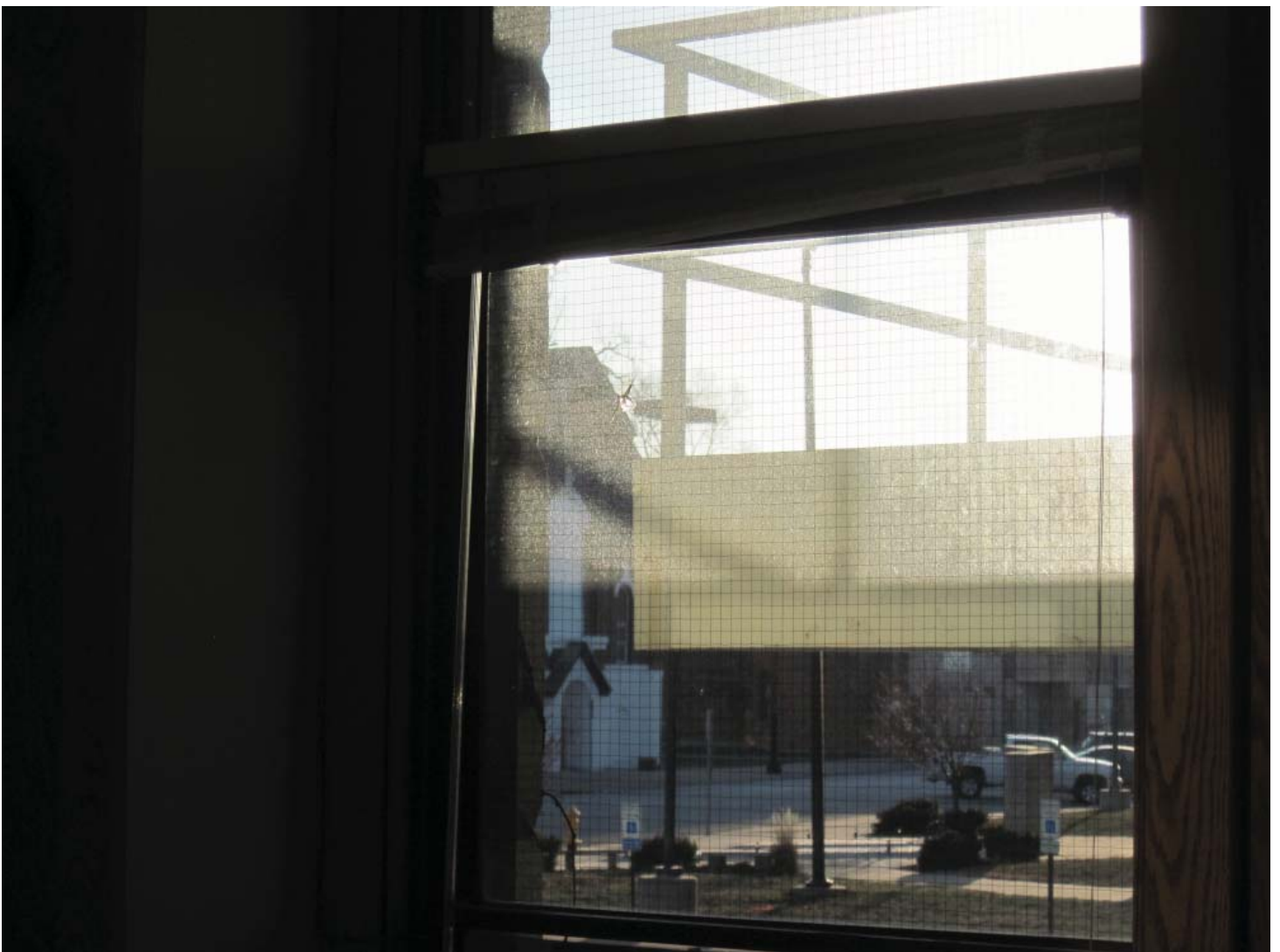
1) Leakage from outside along window in rotunda has caused plaster damage in picture above.



2) Leakage from outside along window in rotunda has caused plaster damage in picture above.



2) Threshold issue



Window in judges chambers is unable to be locked. Makeshift board keeps window in place and closed (see pic #4)



Pic #5) Recycling "bin" in breakroom placed next to radiator. Probably not an issue.

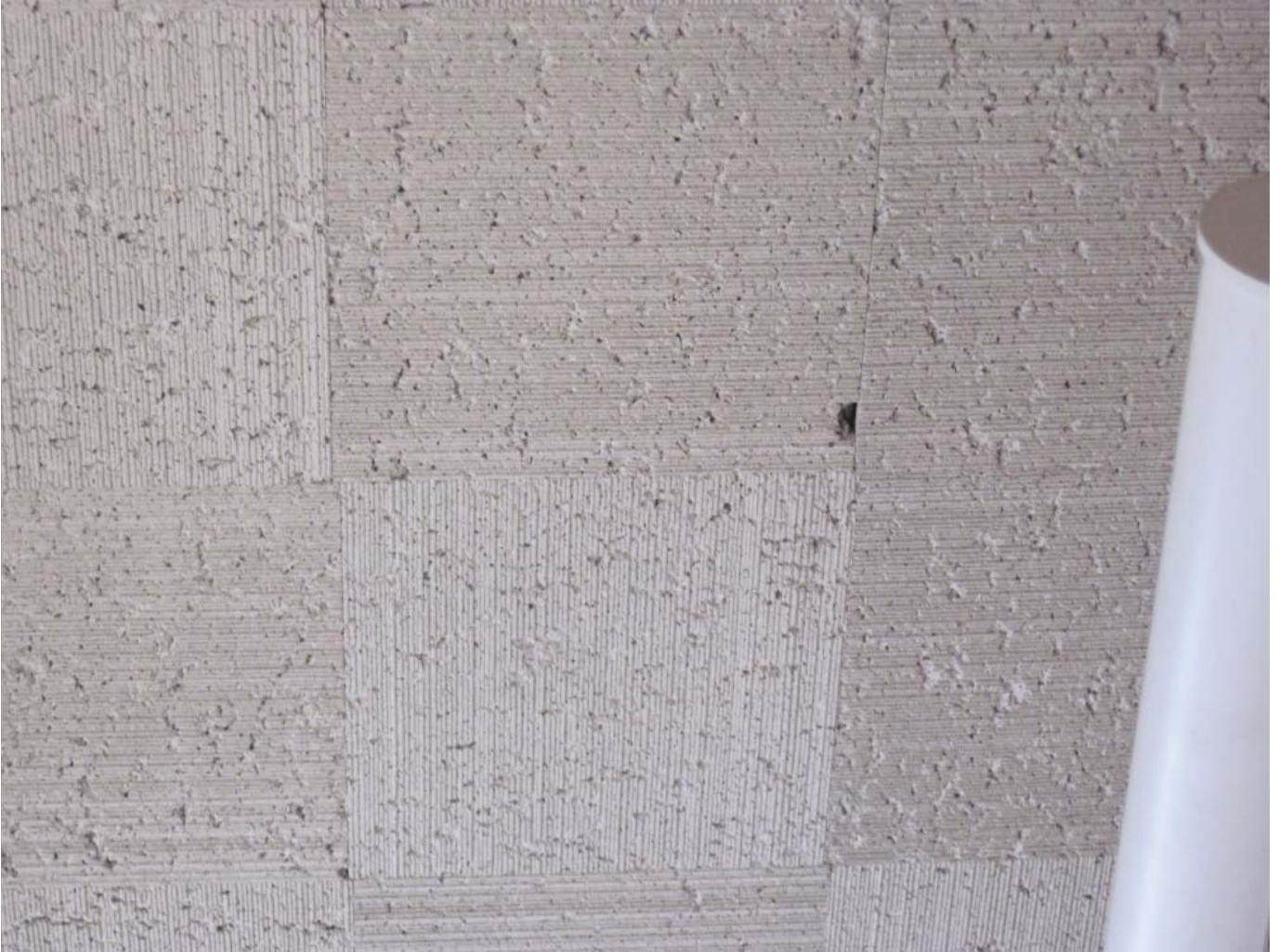


Pic #6) Breakroom



Pic #7 Restroom has painted window and step up access





Pic #9. Masonite ceiling tiles are crumbling in judges' chamber.



Pic #10. Masonite ceiling tile piece that has fallen from the ceiling



Pic #11 Repair work being done on drinking fountain issue.



Pic #12 Storage area in basement



Pic #13 Storage area in basement



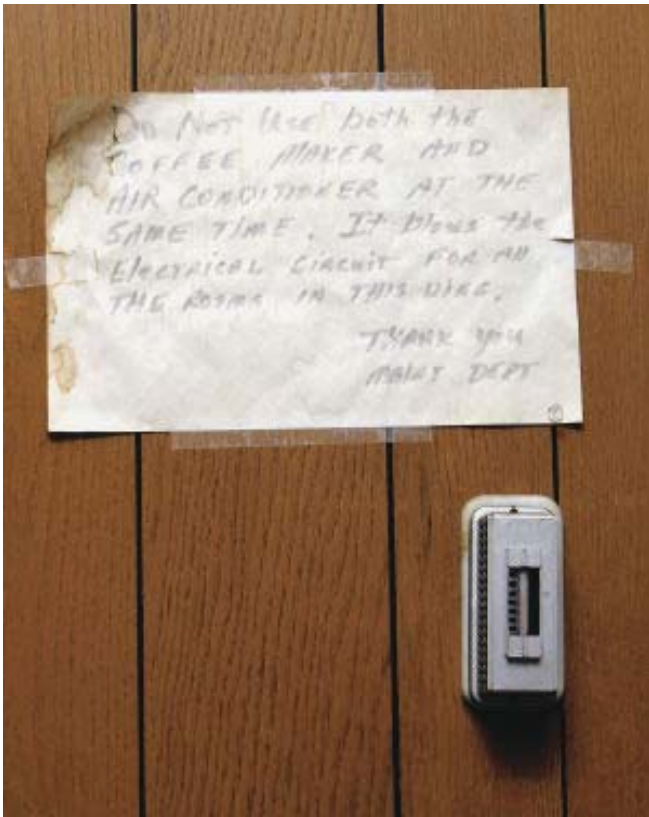
Pic #14 Storage area in basement



Pic #15 Storage area in basement



Pic #16 Storage area in basement



Pic #17 Note regarding circuit that does not allow air conditioning and coffee maker to operate at the same time.